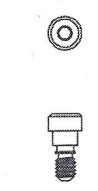


JOB#
500-012

ACTUAL SIZE
SCALE: 6/1



TITLE:
JACKSCREW, 4-40

PART #:
M83513/5-12

REVISION: H
MATERIAL:
303 SST (B)
SEE NOTE 2

FINISH:
PASSIVATE
SAE-AMS-2700

PLATING:
N/A

TOLERANCES:
.XXX±
.XXX±
FRACTION ±
ANGLE ± 3°
CONCENTRICITY: .003 TIR

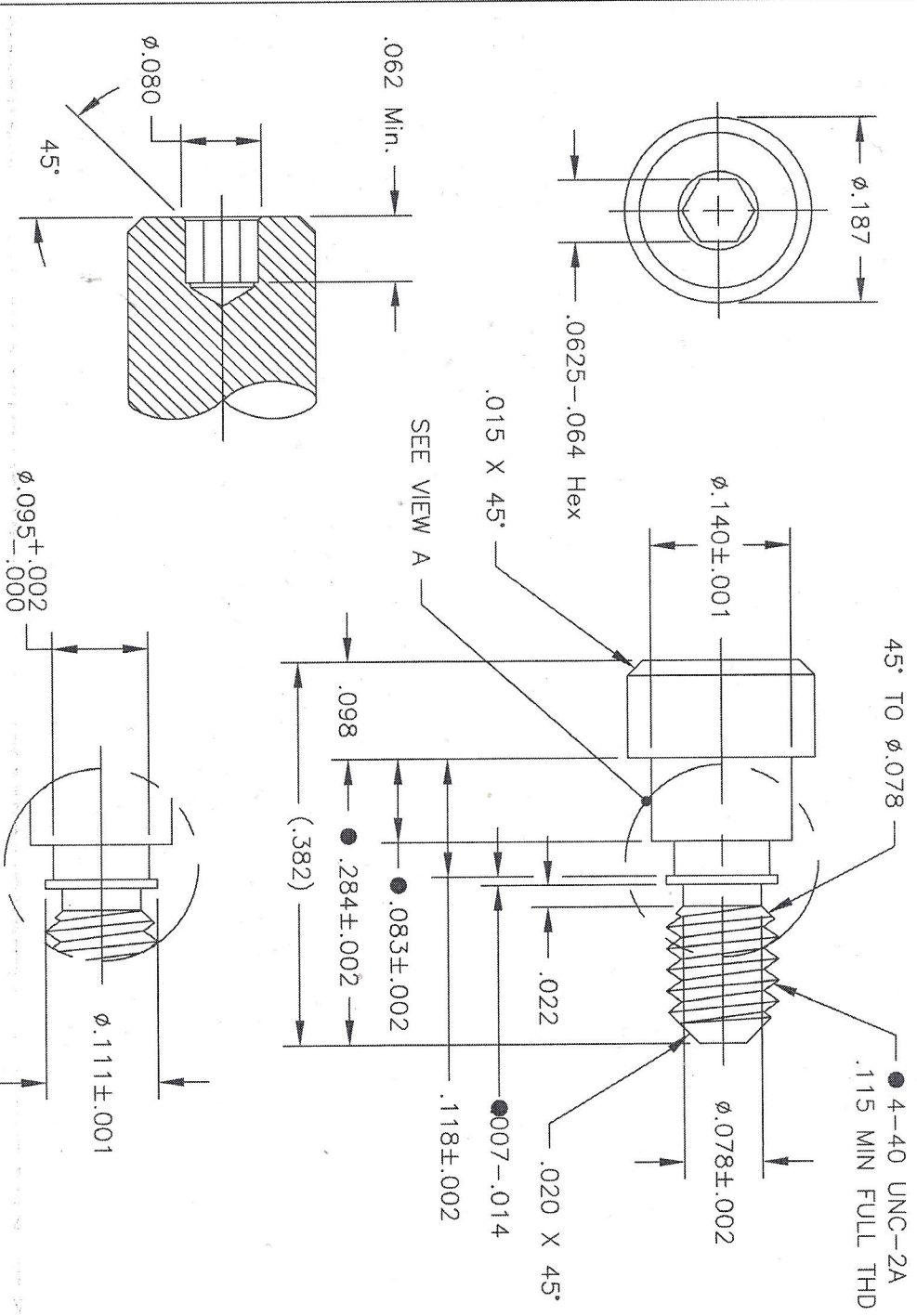
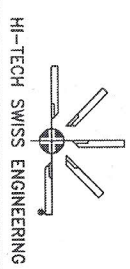
APPROVALS DATE

DRAWN BY:
M. FELKINS
99/10/27

CHECKED BY:
C. DUBREUIL
11/02/99

Q.C. BY:
J. FLOWERS
11/02/99

F/N: 500-012-A



CRITICAL CHARACTERISTIC
SPC REQD (VARIABLE)

MAJOR CHARACTERISTIC
SPC REQD (ATTRIBUTE)

NOTES:
1. REMOVE ALL BURRS AND SHARP EDGES.
2. MATERIAL CONDITION/125,000 P.S.I. MINIMUM TENSILE.